

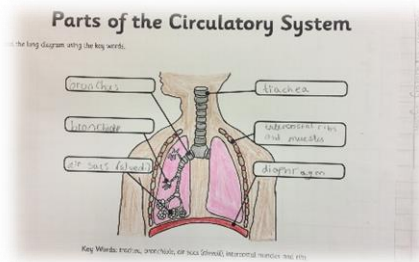


Community

Framfield Church of England Primary School Newsletter

31st January 2020

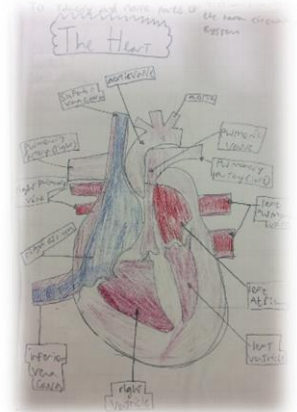
Dear Parents



Teaching and Learning

Since my last newsletter, I have been pleased to get involved in teaching some science in KS1 and looking at the books of proud scientists in KS2. In Kingfishers Class the children have studied at the life cycles of different plants and how plants grow. I have been impressed with the children's depth of understanding and the way that they link their own experiences of the world around them to their new learning. Mrs Tsapparelli is our science lead and she provides the children with varied opportunities and stimuli through books, videos and hands on learning. Jimmy, as always has been very helpful in getting the broad bean plants started.

In Eagles Class, pupils have been learning about the human body and in particular the circulatory system. I have had several visits from excited children who have shown me their excellent work and talked about what they have learnt. The pictures show examples of their diagrams including the chambers of the heart.



Books, Books, Books!

This week we took delivery of our beautiful topic books, which were kindly donated to us by the PTFA. The children were so excited to receive them and we are truly grateful to the PTFA and all of the parents who have supported their events. Although we now have the internet, there is nothing to compare to the joy of opening a quality book which brings learning to life. The books were chosen by the teachers to match the current learning journey and they are all well written and beautifully illustrated.



School Bursar

Unfortunately we said good bye to Mrs Evans last year. Our newly appointed bursar, Mrs Josling will start on Tuesday 11th February, Mrs Josling will be working across the Federation working part time in each school. We would like to warmly welcome her to the Framfield team.

Wishing you all an enjoyable weekend

Mrs Pestell
Headteacher

Tm 3/Week 5		
Monday	03/02	Kingfishers Forest School, Year 2 SATS Club, 3-4pm Construction Club, 3-4pm
Tuesday	04/02	Violin Lessons Year 6, Rugby Festival, Uckfield Rugby Club, 1-3pm Le Tennis, 3-4pm Dance Club, 3-4pm Computing Coding, 3-4pm
Wednesday	05/02	
Thursday	06/02	Peacocks Forest School Chess Club, Lunchtime Session Puffins Swimming Lessons Guitar Lessons, Afternoon Sessions Ukulele Lessons, 3-4pm Federation Football Club (BB), 3-4pm
Friday	07/02	Puffins Recorder Lessons
Tm 3 /Week 6		NO SCHOOL LED CLUBS THIS WEEK
Monday	10/02	Kingfishers Forest School, Year 2 Eagles Parent Consultations, 1-3pm & 3.30-6pm
Tuesday	11/02	Safer Internet Day Violin Lessons Le Tennis, 3-4pm Year 3, Personal Challenge Festival, Uckfield College, 3.45-5pm
Wednesday	12/02	Handball Tournament, 1-4pm Peacocks, Kingfishers and Puffins Parent Consultations, 3.15-6pm
Thursday	13/02	Peacocks Forest School Chess Club, Lunchtime Session Puffins Swimming Lessons Guitar Lessons, Afternoon Sessions Eagles PSHE Lesson? Ukulele Lessons, 3-4pm All Stars Football Club, 3-4pm Federation Football Club (BB), 3-4pm Peacocks, Kingfishers and Puffins Parent Consultations, 4-7pm
Friday	14/02	Puffins Recorder Lessons

Future Dates:

SPRING TERM -

Monday 2nd March - Year 6 Trip to Houses of Parliament

Thursday 26th March - FAB Fest

Saturday 28th March, 8 - 11.30pm - Saturday Nights Alright! Elton John tribute and licenced bar - Framfield Village Hall - all proceeds go to School

Friday 3rd April - INSET DAY

SUMMER TERM -

Friday 8th May - May Bank Holiday (Moved from Monday 4th May)

Sunday 10th May - Little Horsted Fun Run

Monday 11th to Thursday 14th May - KS2 SATS

Monday 1st June - INSET DAY

Wednesday 20th May - Eagles Class Modern Foreign Languages Trip to France.

Friday 19th June - Sports Day 9.30am - 12.00 pm- recreation ground

Friday 3rd July - Reserve Sports Day 9.30am - 12.00 pm-recreation ground

Tuesday 23rd June - Friday 26th June - Year 6 Bikeability Course

Tuesday 30th June, Year 6 leavers Service, All Saints Church, Crowborough

Friday 10th July - INSET DAY